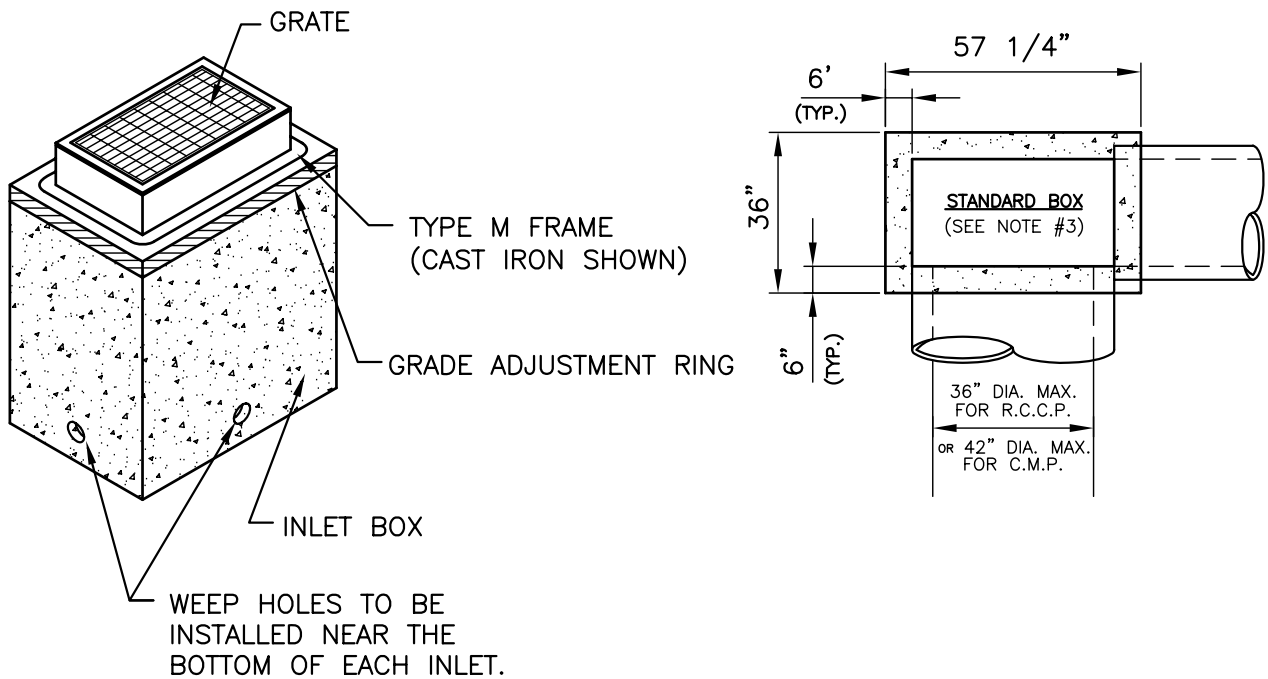


NOTES:

- 1) CONSTRUCT INLET BOXES IN ACCORDANCE WITH THE REQUIREMENTS OF PUBLICATION 408, SECTION 713.2(d), FOR PRECAST CEMENT CONCRETE UNITS
- 2) ONLY PRECAST INLET BOXES SUPPLIED BY A MANUFACTURER LISTED IN BULLETIN 15 SHALL BE PERMITTED.
- 3) PROVIDE STANDARD INLET BOXES AND COVER ADJUSTMENT SLABS WITH A 24" X 45 1/4" OPENING TO ACCOMMODATE STANDARD TOP COMPONENTS.
- 4) INLETS THAT EXCEED THE MAXIMUM HEIGHT SHOWN SHALL REQUIRE A SPECIAL DETAIL AND DESIGN FOR THE INLET WALLS AND BASE. CONSTRUCT INLETS THAT EXCEED 5 FEET IN HEIGHT WITH STEPS SIMILAR TO MANHOLES.
- 5) LOCATE PIPE OR PIPES, AS INDICATED, WITH THE INLET BOTTOM SHAPED TO CHANNEL THE FLOW TOWARD THE OUTLET PIPE.
- 6) PLACE SUBBASE MATERIAL MEETING THE REQUIREMENTS OF PUBLICATION 408, SECTION 350.2, IN 4 INCH LAYERS, COMPACTED TO A DENSITY SATISFACTORY TO THE ENGINEER AND INCIDENTAL TO THE INLET PAY ITEM.
- 7) FOR PIPE DIAMETERS LARGER THAN 36" IN THIS WALL FOR A TYPE 1, USE A MODIFIED TYPE I INLET BOX.
- 8) FOR PIPE DIAMETERS LARGER THAN 48" R.C.C.P. OR 54" C.M.P. IN THIS WALL FOR A TYPE 2, USE A MODIFIED TYPE II INLET BOX.
- 9) FOR PIPE DIAMETERS LARGER THAN 48" R.C.C.P. OR 54" C.M.P. IN THE LONG DIRECTION OR LARGER THAN 36" IN THE SHORT DIRECTION, A SPECIAL DETAIL AND DESIGN IS REQUIRED.



## Center Township Standard Detail

TYPE M INLET

SD12